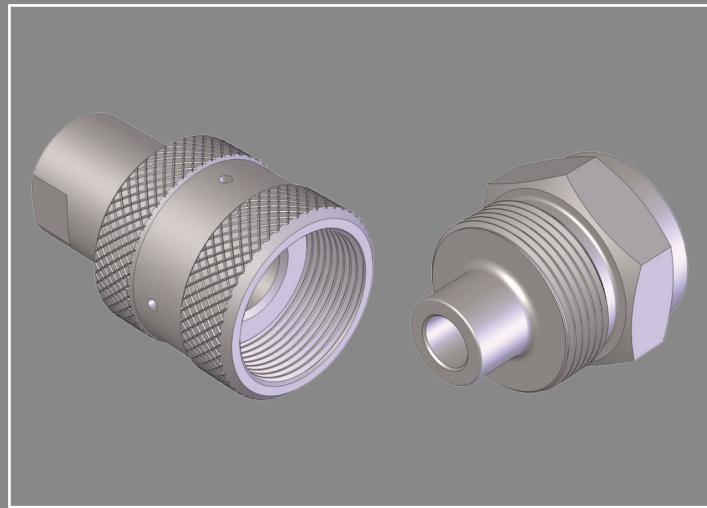
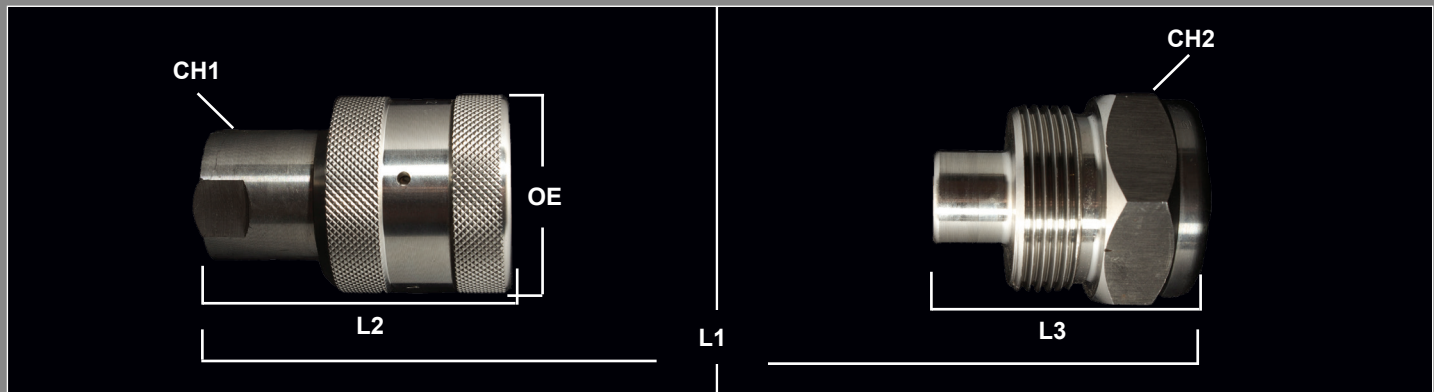


CRS SERIES QUICK COUPLINGS

Ultra High Pressure - Unvalved - 316 Stainless Steel
 Sizes: 1/2"



Features and Applications

- Offered in 15,000 PSI or 20,000 PSI
- Screw Type
- Waterblast
- Water Jetting
- Wireline - Grease Injection
- High Pressure
- 15,000 PSI and 20,000 PSI is non-interchangeable with each other

MATERIALS

Body: 316 Stainless Steel
 Seals: NBR standard seals
 Threads: NPT

DIMENSIONAL & PRESSURE RATING DATA

Body Size	CH1	CH2	CH3	L1	L2	L3	Optimal Flow Rate (GPM)	Max Working (PSI)
08	1.130	1.625	1.860	3.773	2.910	2.040	Unvalved	15,000
08	1.130	1.625	1.860	3.773	2.910	2.040	Unvalved	20,000
12	1.510	2.000	2.240	4.370	3.430	2.480	Unvalved	
16	1.630	2.240	2.750	4.370	3.560	2.50	Unvalved	

units: inches

ORDERING INFORMATION

QUICK COUPLING PART NUMBERING SYSTEM:

CRS - 15K - 08 - 08 - C - NPT

